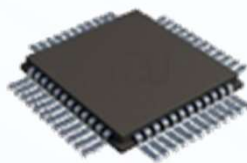




Passion to Your Needs



• COMPANY OVERVIEW

Founded in 2007, CROWN dedicate to becoming the professional fan manufacturer.

CROWN has supplied dependable, quality DC and AC fan motors to OEMs around the world.

Products of Crown DC fan are widely applied in the telecommunications, networking, office automation, home electronics, medical and industrial machines.



China Factory

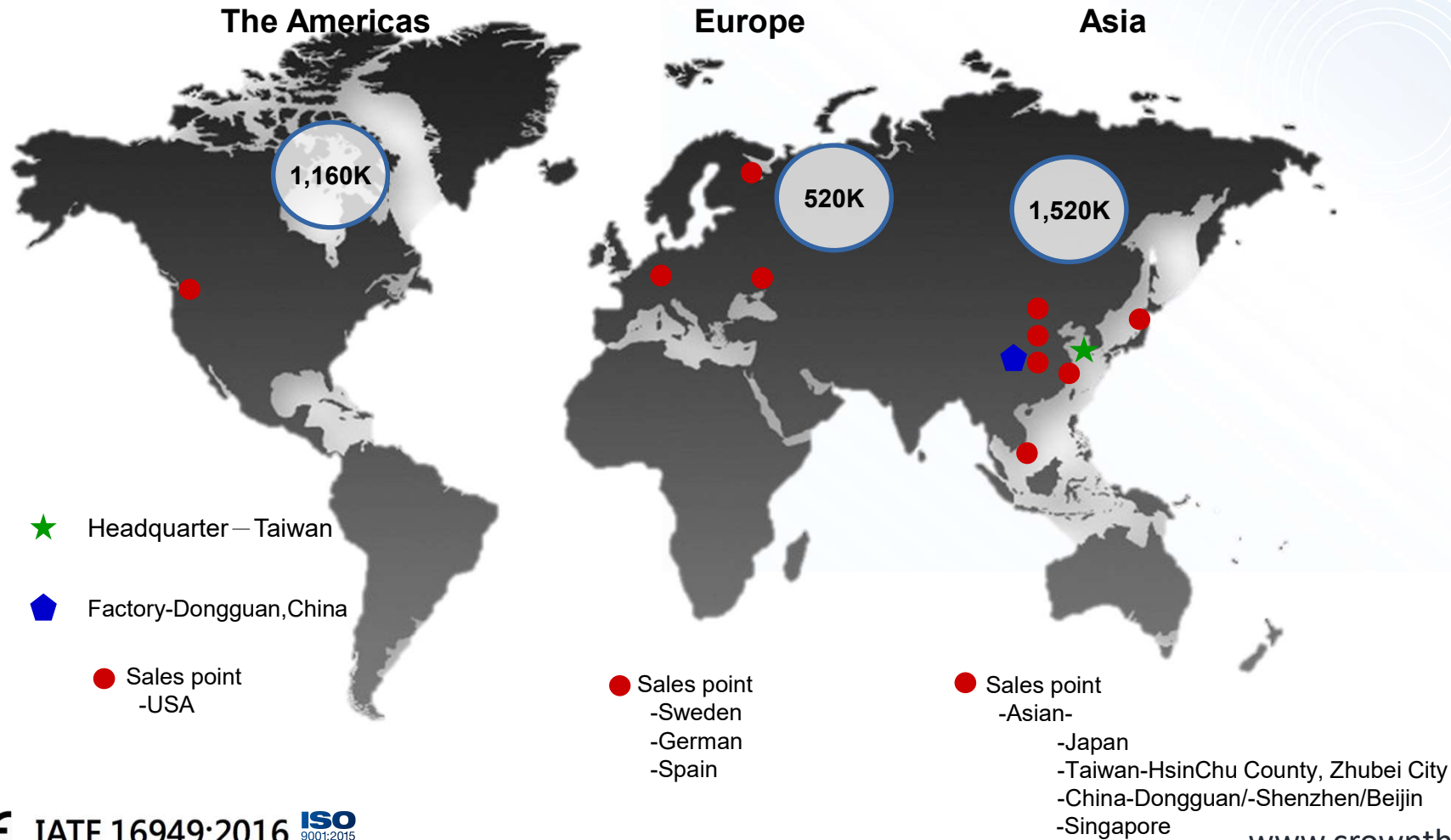


Taiwan Headquarter



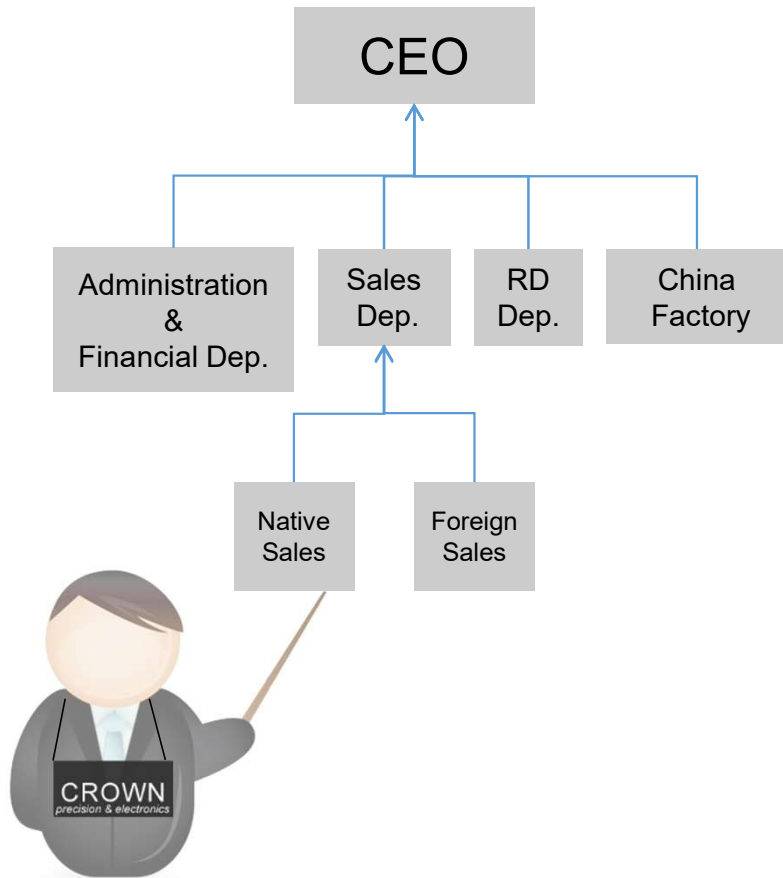
- ▼ **2007** CROWN founded
- ▼ **2008** ISO 9001 certificate
- ▼ **2009** OEM service
- ▼ **2010** Own branded
- ▼ **2011** Launch dc fan for server
- ▼ **2012** Launch AC axial fan
- ▼ **2013** Move to Yue Tang factory square 5,500m²
- ▼ **2016** Move to Suibei factory

• LOCATION & SHIPPING



www.crownthermal.com

• ORGANIZATION



- Headquarter: Taiwan-HsinChu County, Zhubei City
- -Administration, Financial, Sales, R&D Center

Factory: Dongguan City, Guangdong Province, China

- -5,500m²;120 employees
- -Manufacturing, Product developing, Sales

• Customer



Every year, Millions of crown products are used in a variety of devices and machines behind our everyday life.



Medical
Equipment



Server



Transportation



Home
Appliances



Industry
Machine



Defense
Industry



• BUSINESS



**CROWN branded
production**



**STANDARD
PRODUCT**

**OEM/ODM for customer
owning design and brand.**

**OEM/ODM
MANUFACTURING**

**CUSTOMIZED
PRODUCT**

**Products for customer's
special needs.**

• STANDARD PRODUCT

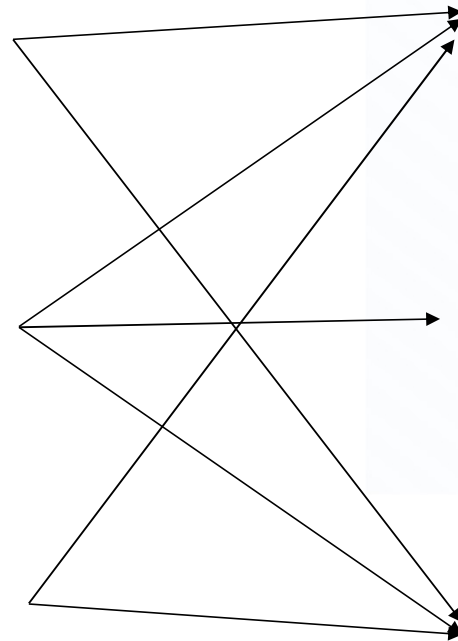


- On basis of the outer motor, we develop a series of standard product for our customers.

AC Motor

DC Motor

EC Motor



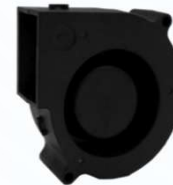
Axial Fan



- DC 25x25x10~Ø254x89mm
- EC 60X60X25~120X120X38mm
- AC 80X80X38~172X150X51mm

Highest Speed:26,000RPM

Blower Fan



- DC 40x40x20~97x97x33mm

Motorized Impeller



- DC Ø133~250mm
- EC Ø133~400mm
- EC Ø133~250mm

- CROWN PRODUCT



DC Axial Fan



DC Blower



DC Motorized
Impeller



DC Cross
Flow Fan



AC Axial Fan



EC Motorized
Impeller



AC Motorized
Impeller



AC Cross
Flow Fan



• CUSTOMIZED PRODUCT

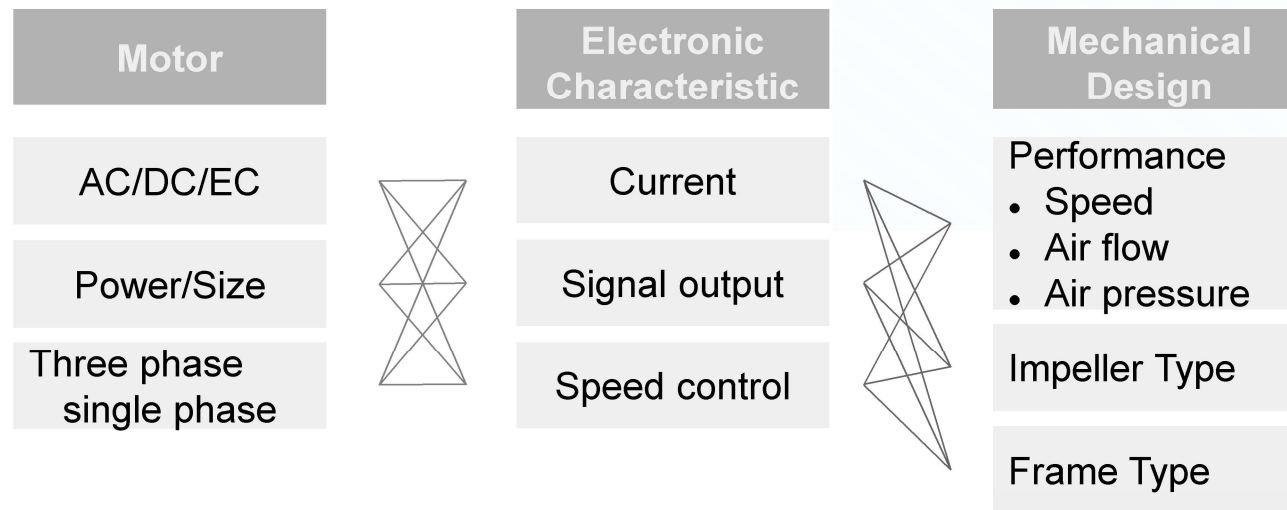
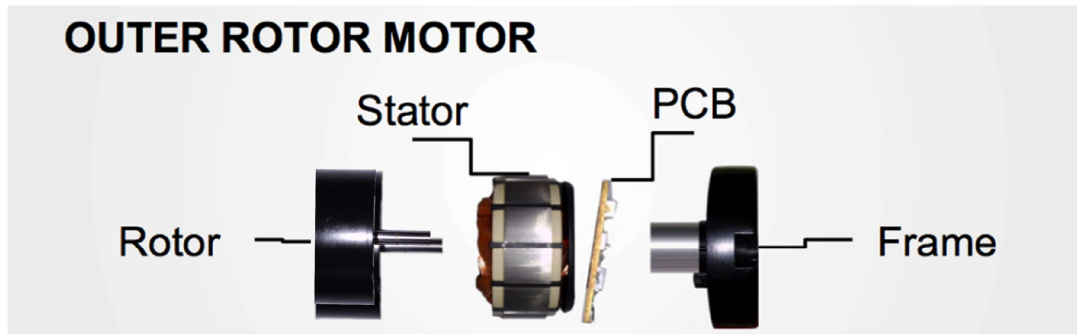


- It's OK! If our standard products can't satisfy you. Customizations is available on the basis of our AC/DC motor technology.

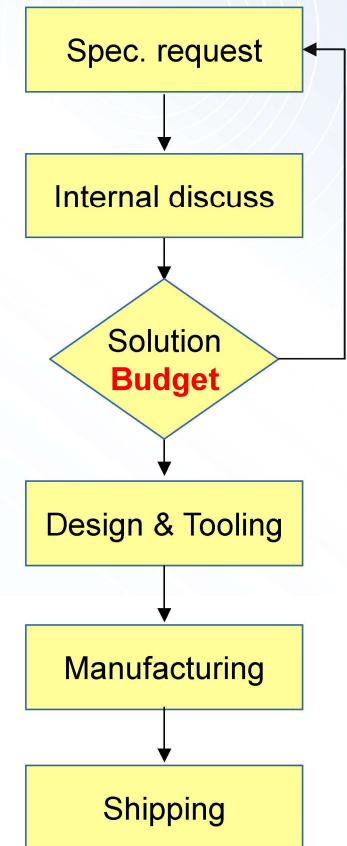


• CUSTOMIZATION

All of the customizations are based on our AC/DC/EC outer rotor motor.



PROCESS



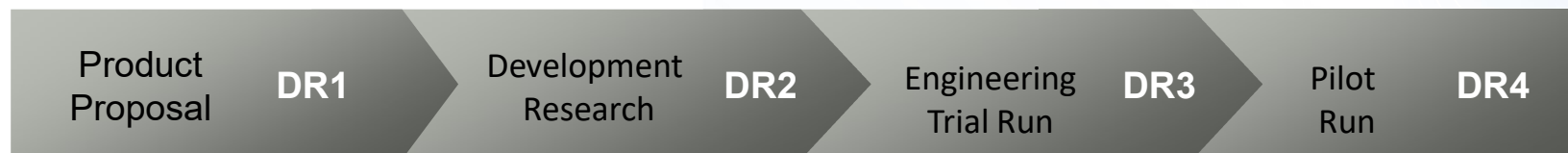
www.crownthermal.com

• R&D



With the strict design process, all our products go through a complete test plan to prove the product reliability.

• Design Process

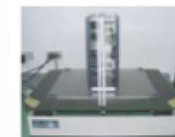


• Reliability test

- Low Temperature Test
- High Temperature Test
- Thermal Cycling & Power on/off Test
- Impeller Locked Test
- Humidity Exposure test
- Thermal Shock test



- Vibration Test



- Mechanical Shock Test



- Air Flow / Air Pressure



- Noise test



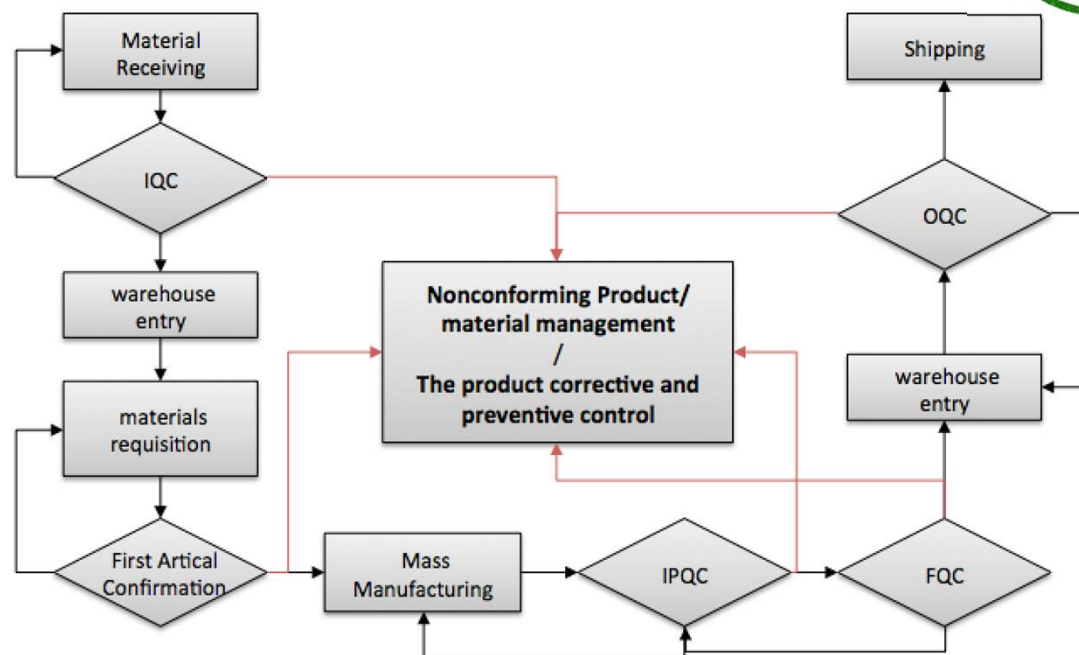
• QUALITY

Follows ISO9001 to lay out our quality system, organization and all of our products are compliant to ROHS, CE, cUL requirements.

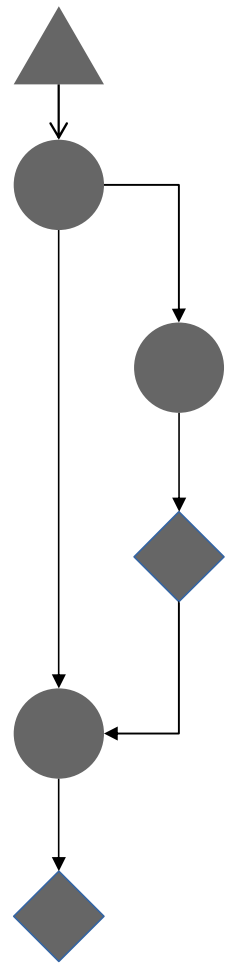
- Quality System: ISO9001
ISO14001
IATF16949
- Quality Team: IQC/IPQC/FQC/OQC
- Product Certification:



CROWN P&E Quality System Control Flow Chart



• MANUFACTURING



Material
Input
Motor
Assembling

Impeller
Assembling

Impeller
Balancing

Final
Assembling

Finished
Product Test



winding



PCB
Assembling



wire soldering



Motor testing



IA Lines



IA Lines



Balancing
Line



Balancing Line



Balancing
Room



Auto FA line



Auto FA line



Characteristic
Test



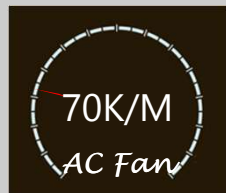
Vibration
& Noise Test



Burning
Room



**CROWN P&E
PRODUCTION
CAPACITY**



www.crownthermal.com

• WHY CROWN?

- Reliability design
 - All of our products go through a series of tough tests before launching
- 100% quality assurance
 - 100% motor testing
 - 100% impeller balancing testing
 - 100% fan characteristic testing
- Automatized manufacturing
 - 55% of processing have been automation
 - 85% of processing will be performed by auto-machine by the end of 2018.
 - Automation advantage: cost-reduction, quality reliability, shorter leading time
- Genuine material
 - CCP PBT Material
 - Japanese precision ball bearing
 - High-quality electronic parts & design

CROWN
Thermal™





Please contact the follow if any question on us.

E-mail: esme@crownthermal.com

Tel: 886-2-5533869 #25

The End

www.crownthermal.com