

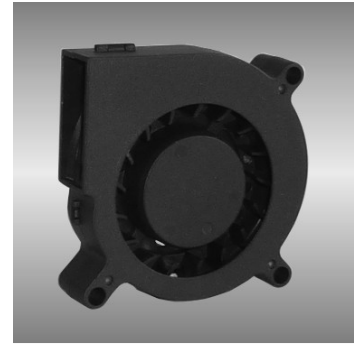
# 60

## BGE series

### 60X60X15mm

#### ●General Specification

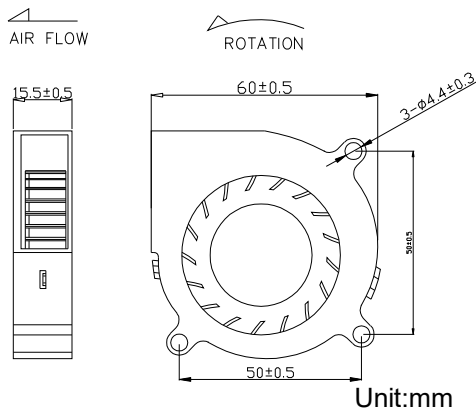
- Motor / DC single phase brushless motor
- Material / Frame : PBT (94V-0) ; Impeller : PBT(94V-0)
- Operation temp. / Two ball bearing : -10°C~70°C  
FMB,sleeve Bearing : -10°C~50°C
- Storage temp. / -40°C~80°C
- Non-condensing environment
- Weight / 40g



#### ●Specification \*Bearing system B:two ball bearing F:fluid bearing S:sleeve bearing

Model	Bearing System	Rated Voltage	Operating Voltage Range	Rated Current	Rated Speed	Maximum Air Flow		Maximum Static Pressure		Sound Level	P-Q Curve
Part No.	B / S / F	V	V	A	RPM	m <sup>3</sup> /min	CFM	Pa	In-H <sub>2</sub> O	dBA	No.
BGE06015_12L	B	12	7.0~13.2	0.07	3500	0.07	2.4	70.6	0.28	27	①
BGE06015_12M	B	12	7.0~13.2	0.09	4500	0.09	3.1	109.8	0.44	33	②
BGE06015_12H	B	12	7.0~13.2	0.11	5500	0.20	3.8	177.4	0.71	37	③
BGE06015_12U	B	12	7.0~13.2	0.13	6500	0.32	4.6	221.6	0.89	45	④

#### ● Drawing



#### ● Characteristic Curves

