

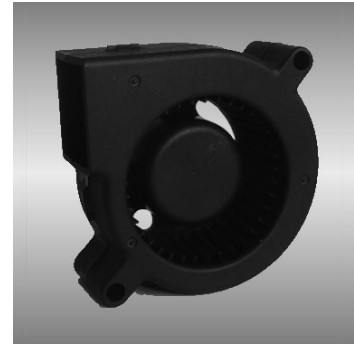
# 60

## BGE series

### 60X60X25mm

#### ●General Specification

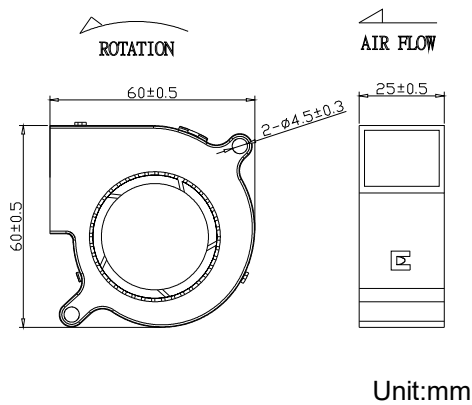
- Motor / DC single phase brushless motor
- Material / Frame : PBT (94V-0) ; Impeller : PBT(94V-0)
- Operation temp. / Two ball bearing : -10°C~70°C  
FMB,sleeve Bearing : -10°C~50°C
- Storage temp. / -40°C~80°C
- Non-condensing environment
- Weight / 55g



#### ●Specification \*Bearing system B:two ball bearing F:fluid bearing S:sleeve bearing

Model	Bearing System	Rated Voltage	Operating Voltage Range	Rated Current	Rated Speed	Maximum Air Flow	Maximum Static Pressure	Sound Level	P-Q Curve		
Part No.	B / S / F	V	V	A	RPM	m <sup>3</sup> /min	CFM	Pa	In-H <sub>2</sub> O	dBA	No.
BGE06025_12I	B/F	12	7.0~13.2	0.10	2500	0.16	5.6	52.9	0.21	24	①
BGE06025_12L	B/F	12	7.0~13.2	0.25	3500	0.20	7.2	100.0	0.40	27	②
BGE06025_12M	B/F	12	7.0~13.2	0.40	4500	0.30	10.5	187.7	0.75	41	③
BGE06025_12H	B/F	12	7.0~13.2	0.50	5500	0.36	12.8	282.5	1.13	47	④

#### ● Drawing



#### ● Characteristic Curves

