

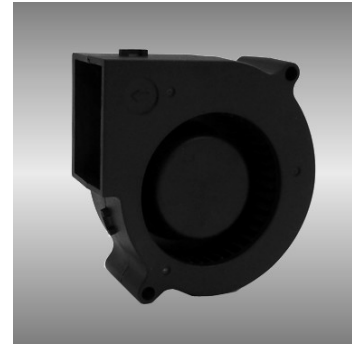
75

BGE series

75X75X30mm

● General Specification

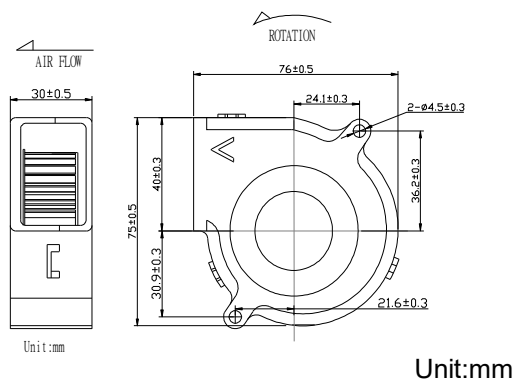
- Motor / DC single phase brushless motor
- Material / Frame : PBT (94V-0) ; Impeller : PBT(94V-0)
- Operation temp. / Two ball bearing : -10°C~70°C
FMB,sleeve Bearing : -10°C~50°C
- Storage temp. / -40°C~80°C
- Non-condensing environment
- Weight / 100g



● Specification *Bearing system B:two ball bearing F:fluid bearing S:sleeve bearing

Model	Bearing System	Rated Voltage	Operating Voltage Range	Rated Current	Rated Speed	Maximum Air Flow		Maximum Static Pressure		Sound Level	P-Q Curve
Part No.	B / S / F	V	V	A	RPM	m ³ /min	CFM	Pa	In-H ₂ O	dBA	No.
BGE07530_12J	B/F	12	7.0~13.2	0.24	2600	0.31	10.9	77.2	0.31	32	①
BGE07530_12L	B/F	12	7.0~13.2	0.30	3000	0.36	12.7	89.6	0.36	41	②
BGE07530_12M	B/F	12	7.0~13.2	0.38	3600	0.48	17.0	119.5	0.48	48	③
BGE07530_12H	B/F	12	7.0~13.2	0.45	4000	0.60	21.4	154.4	0.62	51	④
BGE07530_24J	B/F	24	14.0~26.4	0.13	2600	0.31	10.9	77.2	0.31	32	①
BGE07530_24L	B/F	24	14.0~26.4	0.16	3000	0.36	12.7	89.6	0.36	41	②
BGE07530_24M	B/F	24	14.0~26.4	0.22	3600	0.48	17.0	119.5	0.48	48	③
BGE07530_24H	B/F	24	14.0~26.4	0.26	4000	0.60	21.4	154.4	0.62	51	④

● Drawing



● Characteristic Curves

