

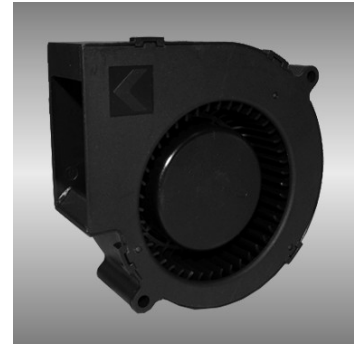
# 97

## BGF series

97X97X33mm

### ● General Specification

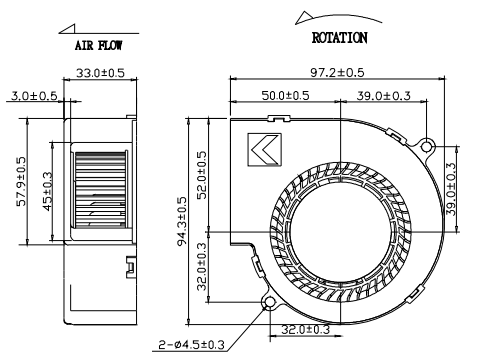
- Motor / DC single phase brushless motor
- Material / Frame : PBT (94V-0) ; Impeller : PBT(94V-0)
- Operation temp. / Two ball bearing : -10°C~70°C  
FMB,sleeve Bearing : -10°C~50°C
- Storage temp. / -40°C~80°C
- Non-condensing environment
- Weight / 180g



### ● Specification \*Bearing system B:two ball bearing F:fluid bearing S:sleeve bearing

Model	Bearing System	Rated Voltage V	Operating Voltage Range V	Rated Current A	Rated Speed RPM	Maximum Air Flow m <sup>3</sup> /min	Maximum Air Flow CFM	Maximum Static Pressure Pa	Maximum Static Pressure In-H <sub>2</sub> O	Sound Level dBA	P-Q Curve No.
Part No.	B / S / F	V	V	A	RPM	m <sup>3</sup> /min	CFM	Pa	In-H <sub>2</sub> O	dBA	No.
BGF09733_12L	B	12	7.0~13.2	0.38	2700	0.69	24.2	185.5	0.75	48	①
BGF09733_12M	B	12	7.0~13.2	0.66	3200	0.82	28.7	286.1	1.15	52	②
BGF09733_12H	B	12	7.0~13.2	0.88	3600	0.91	32.1	337.6	1.36	55	③
BGF09733_12U	B	12	7.0~13.2	1.55	4200	1.09	38.6	496.0	1.99	59	④
BGF09733_12V	B	12	7.0~13.2	1.90	5000	1.29	45.6	722.1	2.90	63	⑤

### ● Drawing



Unit:mm

### ● Characteristic Curves

