

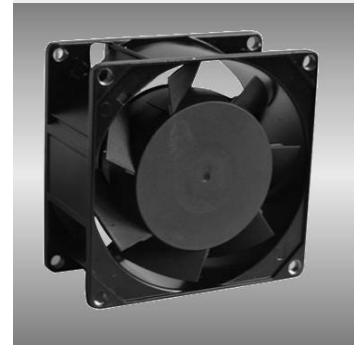
# 80

## IGE series

### 80X80X38mm

#### ● General Specification

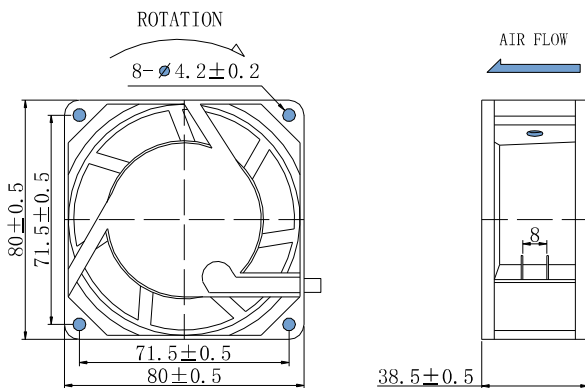
- Motor / Inner rotor, shaded pole AC motor
- Material / Frame: Al alloy  
Impeller: PBT plastic
- Insulation / Class 'B' or 'F'
- Connection / Lead wires ; Terminal
- Weight / 370 g



Model	Motor Type	Bearing System	Rated Voltage	Frequency	Watt	Rated Speed	Maximum Air Flow	Maximum Static Pressure	Sound Level
Part No.	○/◎	B / S / F	V	Hz	W	RPM	m <sup>3</sup> /min CFM	mm-H <sub>2</sub> O In-H <sub>2</sub> O	dBA
IGE08038_1H	○	B	110	50/60	13/10	2450/2950	0.69/0.85 24/30	3.5/4.6 0.14/0.18	29/30
IGE08038_2H	○	B	230	50/60	13/10	2450/2950	0.69/0.85 24/30	3.5/4.6 0.14/0.18	29/30

Motor type ○:shaped pole AC motor/◎:capacitor induction motor

#### ● Drawing



#### ● Characteristic Curves

