

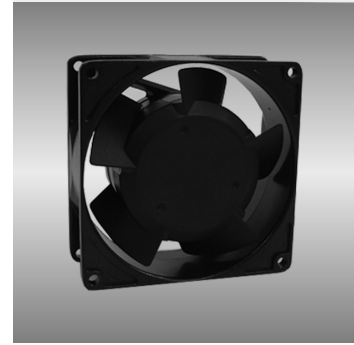
92

IGE series

92X92X25mm

● General Specification

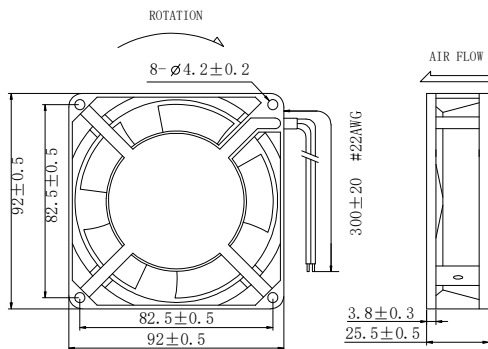
- Motor / Inner rotor, shaded pole AC motor
- Material / Frame: Al alloy
Impeller: PBT plastic
- Insulation / Class 'B' or 'F'
- Connection / Lead wires ; Terminal
- Weight / 290 g



Model	Motor Type	Bearing System	Rated Voltage	Frequency	Watt	Rated Speed	Maximum Air Flow	Maximum Static Pressure	Sound Level
Part No.	O/⊙	B / S / F	V	Hz	W	RPM	m ³ /min CFM	mm-H ₂ O In-H ₂ O	dBA
IGE09225_1H	⊙	B	110	50/60	15/13	2400/2800	0.85/0.99 30/35	4.0/5.0 0.16/0.20	30/31
IGE09225_2H	⊙	B	230	50/60	15/13	2400/2800	0.85/0.99 30/35	4.0/5.0 0.16/0.20	30/31

Motor type ○:shaped pole AC motor/⊙:capacitor induction motor

● Drawing



● Characteristic Curves

