

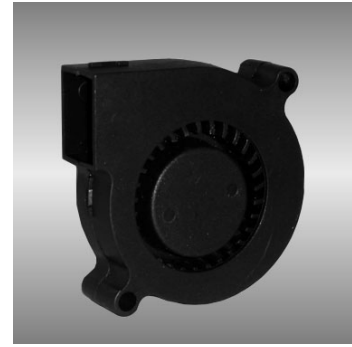
# 50

## BGE series

### 50X50X15mm

#### ● General Specification

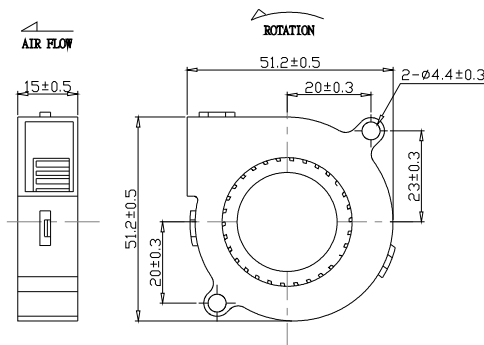
- Motor / DC single phase brushless motor
- Material / Frame : PBT (94V-0) ; Impeller : PBT(94V-0)
- Operation temp. / Two ball bearing : -10°C~70°C  
FMB,sleeve Bearing : -10°C~50°C
- Storage temp. / -40°C~80°C
- Non-condensing environment
- Weight / 30g



#### ● Specification \*Bearing system B:two ball bearing F:fluid bearing S:sleeve bearing

Model	Bearing System	Rated Voltage	Operating Voltage Range	Rated Current	Rated Speed	Maximum Air Flow	Maximum Static Pressure	Sound Level	P-Q Curve		
Part No.	B / S / F	V	V	A	RPM	m <sup>3</sup> /min	CFM	Pa	In-H <sub>2</sub> O	dBA	No.
BGE05015_05L	B/S	5	4.5~5.5	0.09	3500	0.07	2.5	68.6	0.28	27	①
BGE05015_05M	B/S	5	4.5~5.5	0.12	4500	0.09	3.2	109.8	0.44	33	②
BGE05015_05H	B/S	5	4.5~5.5	0.18	5500	0.10	3.6	138.2	0.56	37	③
BGE05015_05U	B/S	5	4.5~5.5	0.18	6500	0.13	4.6	215.7	0.87	45	④
BGE05115_12L	B/S	12	7.0~13.2	0.06	3500	0.07	2.5	68.6	0.28	27	①
BGE05115_12M	B/S	12	7.0~13.2	0.07	4500	0.09	3.2	109.8	0.44	33	②
BGE05115_12H	B/S	12	7.0~13.2	0.09	5500	0.10	3.6	138.2	0.56	37	③
BGE05115_12U	B/S	12	7.0~13.2	0.15	6500	0.13	4.6	215.7	0.87	45	④
BGE05115_12V	B/S	12	7.0~13.2	0.15	7500	0.16	5.3	287.1	1.15	45	⑤
BGE05015_24M	B/S	24	14.0~26.4	0.05	4500	0.09	3.2	109.8	0.44	33	②
BGE05015_24H	B/S	24	14.0~26.4	0.07	5500	0.10	3.6	138.2	0.56	37	③
BGE05015_24U	B/S	24	14.0~26.4	0.12	6500	0.13	4.6	215.7	0.87	45	④

#### ● Drawing



Unit:mm

#### ● Characteristic Curves

