

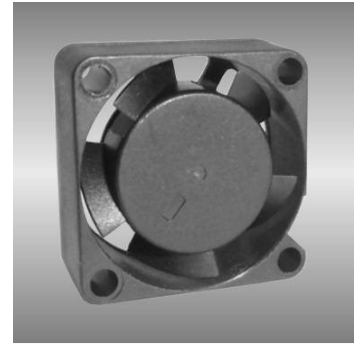
25

AGE series

25X25X10mm

● General Specification

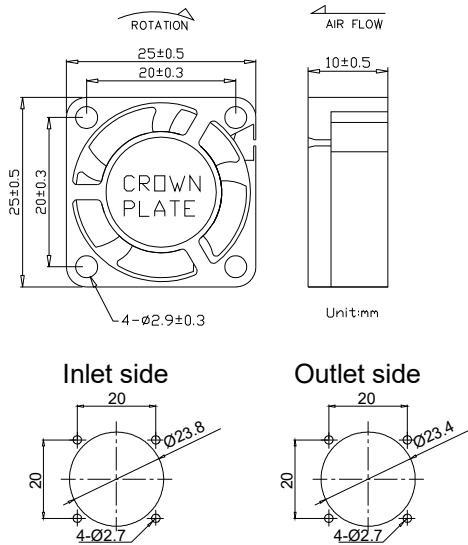
- Motor / DC single phase brushless motor
- Material / Frame : PBT (94V-0) ; Impeller : PBT(94V-0)
- Operation temp. / Two ball bearing : -10°C~70°C
FMB,sleeve Bearing : -10°C~50°C
- Storage temp. / -40°C~80°C
- Non-condensing environment
- Weight / 8g



● Specification *Bearing system B:two ball bearing F:fluid bearing S:sleeve bearing

Model	*Bearing System	Rated Voltage	Operating Voltage	Rated Current	Rated Speed	Maximum Air Flow	Maximum Static Pressure	Sound Level	P-Q Curve		
P/N	B / S / F	V	V	A	RPM	m ³ /min	CFM	Pa	In-H ₂ O	dB(A)	No.
AGE02510B05J	B / F	5	4.5~5.5	0.05	4000	0.01	0.52	7.4	0.03	10	①
AGE02510B05L	B / F	5	4.5~5.5	0.08	7000	0.04	1.32	18.6	0.07	20	②
AGE02510B05M	B / F	5	4.5~5.5	0.13	10000	0.05	1.85	43.1	0.17	24	③
AGE02510B05H	B / F	5	4.5~5.5	0.22	13000	0.07	2.41	71.6	0.29	28	④
AGE02510B12L	B / F	12	7.0~13.2	0.07	7000	0.04	1.32	18.6	0.07	20	①
AGE02510B12M	B / F	12	7.0~13.2	0.08	10000	0.05	1.85	43.1	0.17	24	②
AGE02510B12H	B / F	12	7.0~13.2	0.12	13000	0.07	2.41	71.6	0.29	28	③
AGE02510B24H	B / F	24	14.0~26.4	0.07	13000	0.07	2.41	71.6	0.29	28	③

● Drawing & panel out-cuts



● Characteristic Curves

