

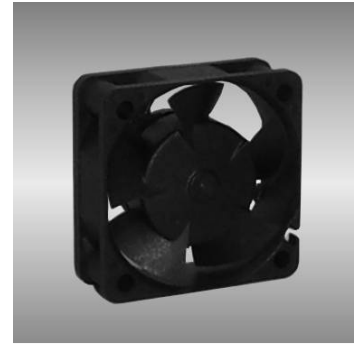
40

AGE series

40X40X15mm

●General Specification

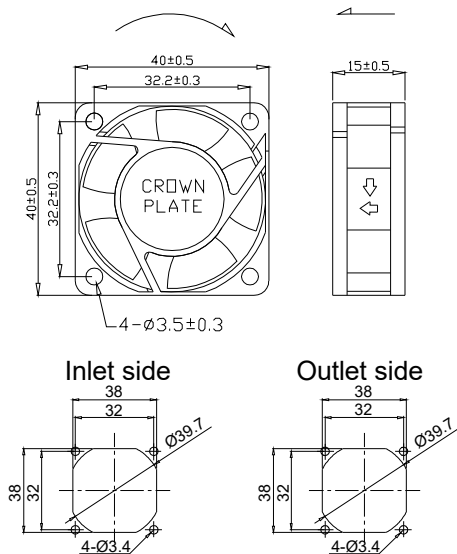
- Motor / DC single phase brushless motor
- Material / Frame : PBT (94V-0) ; Impeller : PBT(94V-0)
- Operation temp. / Two ball bearing : -10°C~70°C
FMB,sleeve Bearing : -10°C~50°C
- Storage temp. / -40°C~80°C
- Non-condensing environment
- Weight / 20g



●Specification *Bearing system B:two ball bearing F:fluid bearing S:sleeve bearing

Model	*Bearing System	Rated Voltage	Operating Voltage	Rated Current	Rated Speed	Maximum Air Flow	Maximum Static Pressure	Sound Level	P-Q Curve		
P/N	B / S / F	V	V	A	RPM	m³/min	CFM	Pa	In-H ₂ O	dBA	No.
AGE04015_12L	B	12	7.0~13.2	0.08	6000	0.19	6.71	49.6	0.20	28	①
AGE04015_12M	B	12	7.0~13.2	0.12	7300	0.23	8.25	73.3	0.29	32	②
AGE04015_12H	B	12	7.0~13.2	0.16	8600	0.30	10.45	93.8	0.38	36	③

● Drawing & panel out-cuts



● Characteristic Curves

