

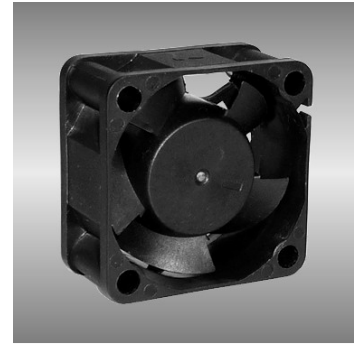
40

AGE series

40X40X20mm

●General Specification

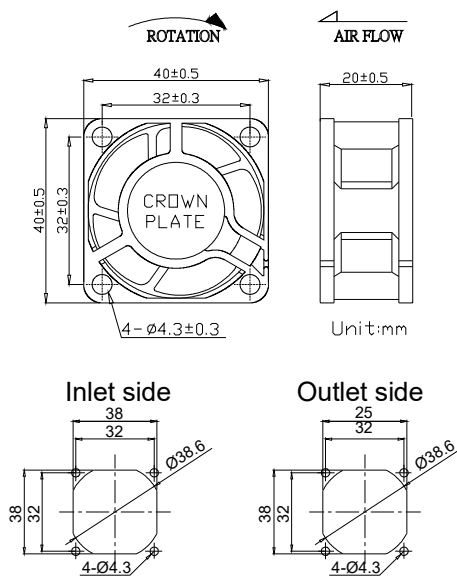
- Motor / DC single phase brushless motor
- Material / Frame : PBT (94V-0) ; Impeller : PBT(94V-0)
- Operation temp. / Two ball bearing : -10°C~70°C
FMB,sleeve Bearing : -10°C~50°C
- Storage temp. / -40°C~80°C
- Non-condensing environment
- Weight / 27g



●Specification *Bearing system B:two ball bearing F:fluid bearing S:sleeve bearing

Model	*Bearing System	Rated Voltage	Operating Voltage	Rated Current	Rated Speed	Maximum Air Flow	Maximum Static Pressure	Sound Level	P-Q Curve		
P/N	B / S / F	V	V	A	RPM	m ³ /min	CFM	Pa	In-H ₂ O	dB(A)	No.
AGE04020_12L	B / S	12	7.0~13.2	0.10	5000	0.21	6.7	47.3	0.19	23	①
AGE04020_12M	B / S	12	7.0~13.2	0.12	6500	0.22	8.4	79.7	0.32	27	②
AGE04020_12H	B / S	12	7.0~13.2	0.16	8600	0.31	9.8	107.1	0.43	36	③
AGE04020_12U	B / S	12	7.0~13.2	0.22	9500	0.31	11.0	117.0	0.47	37	④
AGE04020_24L	B / S	24	14.0~26.4	0.07	5000	0.21	6.7	47.3	0.19	23	①
AGE04020_24M	B / S	24	14.0~26.4	0.09	6500	0.22	8.4	79.7	0.32	27	②
AGE04020_24H	B / S	24	14.0~26.4	0.13	8600	0.31	9.8	107.1	0.43	36	③

● Drawing & panel out-cuts



● Characteristic Curves

