

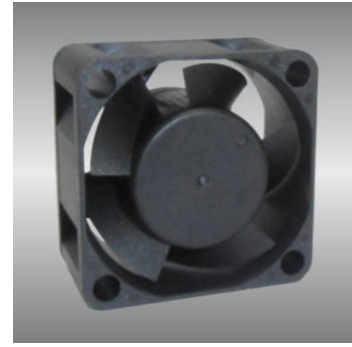
40

AGS series

40X40X20mm

●General Specification

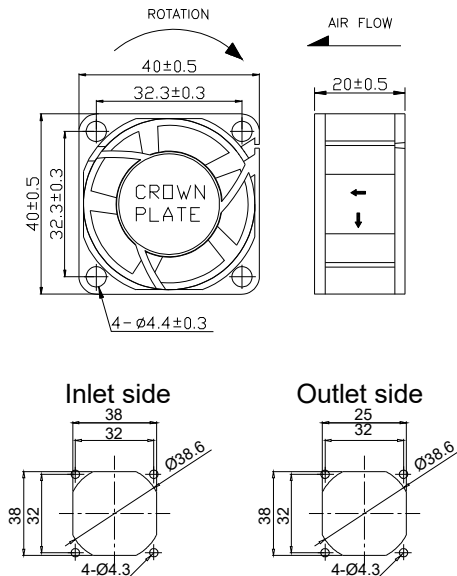
- Motor / DC single phase brushless motor
- Material / Frame : PBT (94V-0) ; Impeller : PBT(94V-0)
- Operation temp. / Two ball bearing : -10°C~70°C
FMB,sleeve Bearing : -10°C~50°C
- Storage temp. / -40°C~80°C
- Non-condensing environment
- Weight / 27g



●Specification *Bearing system B:two ball bearing F:fluid bearing S:sleeve bearing

Model	*Bearing System	Rated Voltage	Operating Voltage	Rated Current	Rated Speed	Maximum Air Flow	Maximum Static Pressure	Sound Level	P-Q Curve		
P/N	B / S / F	V	V	A	RPM	m³/min	CFM	Pa	In-H ₂ O	dBA	No.
AGS04020F12L	F	12	7.0~13.2	0.10	5000	0.21	7.4	47.3	0.19	21	①
AGS04020F12M	F	12	7.0~13.2	0.12	6500	0.22	9.6	79.7	0.32	25	②
AGS04020F12H	F	12	7.0~13.2	0.16	8600	0.31	11.1	107.1	0.43	33	③
AGS04020F24L	F	24	14.0~26.4	0.07	5000	0.21	7.4	47.3	0.19	21	①
AGS04020F24M	F	24	14.0~26.4	0.09	6500	0.22	9.6	79.7	0.32	25	②
AGS04020F24H	F	24	14.0~26.4	0.13	8600	0.31	11.1	107.1	0.43	33	③

● Drawing & panel out-cuts



● Characteristic Curves

