

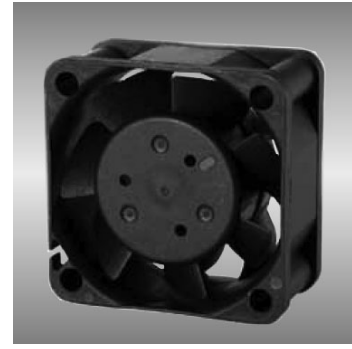
# 40

## AGB series

### 40X40X20mm

#### ●General Specification

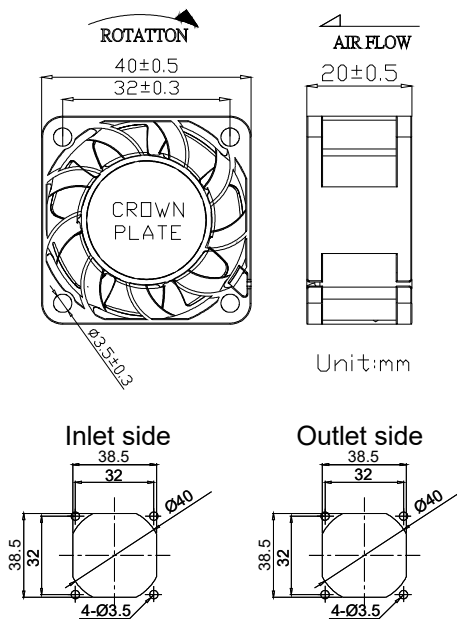
- Motor / DC single phase brushless motor
- Material / Frame : PBT (94V-0) ; Impeller : PBT(94V-0)
- Operation temp. / Two ball bearing : -10°C~70°C  
FMB,sleeve Bearing : -10°C~50°C
- Storage temp. / -40°C~80°C
- Non-condensing environment
- Weight / 45g



#### ●Specification \*Bearing system B:two ball bearing F:fluid bearing S:sleeve bearing

Model	*Bearing System	Rated Voltage	Operating Voltage	Rated Current	Rated Speed	Maximum Air Flow	Maximum Static Pressure	Sound Level	P-Q Curve		
P/N	B / S / F	V	V	A	RPM	m³/min	CFM	Pa	In-H <sub>2</sub> O	dB(A)	No.
AGB04020_12L	B	12	7.0~13.2	0.08	8000	0.27	9.4	87.4	0.35	33	①
AGB04020_12M	B	12	7.0~13.2	0.11	10000	0.33	11.7	136.9	0.55	40	②
AGB04020_12H	B	12	7.0~13.2	0.17	12000	0.41	14.3	196.7	0.79	44	③
AGB04020_12U	B	12	7.0~13.2	0.25	14000	0.48	16.8	268.0	1.08	49	④
AGB04020_12V	B	12	7.0~13.2	0.41	16000	0.56	19.8	358.3	1.44	53	⑤
AGB04020_24H	B	24	14.0~26.4	0.13	12000	0.41	14.3	196.7	0.79	44	③
AGB04020_24U	B	24	14.0~26.4	0.15	14000	0.48	16.8	268.0	1.08	49	④
AGB04020_24V	B	24	14.0~26.4	0.18	16000	0.56	19.8	358.3	1.44	53	⑤

#### ● Drawing & panel out-cuts



#### ● Characteristic Curves

