

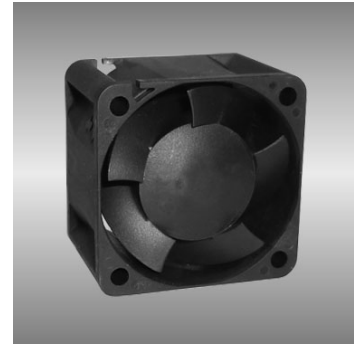
# 40

## AGV series

### 40X40X28mm

#### ● General Specification

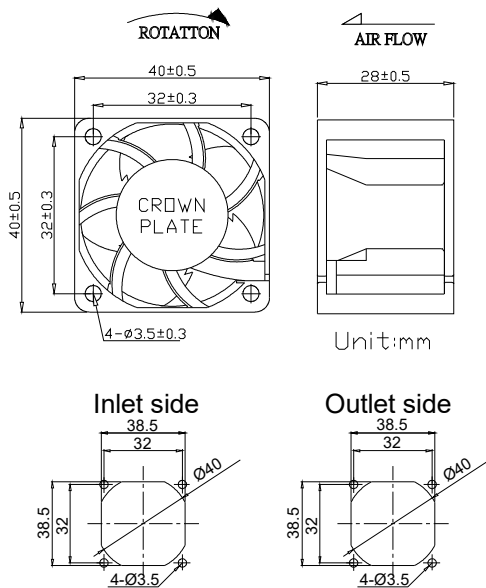
- Motor / DC single phase brushless motor
- Material / Frame : PBT (94V-0) ; Impeller : PBT(94V-0)
- Operation temp. / Two ball bearing : -10°C~70°C  
FMB,sleeve Bearing : -10°C~50°C
- Storage temp. / -40°C~80°C
- Non-condensing environment
- Weight / 49g



#### ● Specification \*Bearing system B:two ball bearing F:fluid bearing S:sleeve bearing

Model	*Bearing System	Rated Voltage	Operating Voltage	Rated Current	Rated Speed	Maximum Air Flow	Maximum Static Pressure	Sound Level	P-Q Curve		
P/N	B / S / F	V	V	A	RPM	m³/min	CFM	Pa	In-H <sub>2</sub> O	dBA	No.
AGV04028B12H	B	12	7.0~13.2	0.30	13000	0.43	15.2	229.1	0.92	43	①
AGV04028B12U	B	12	7.0~13.2	0.40	15000	0.51	17.8	298.8	1.20	46	②
AGV04028B12V	B	12	7.0~13.2	0.60	17000	0.61	21.3	381.0	1.53	50	③

#### ● Drawing & panel out-cuts



#### ● Characteristic Curves

