

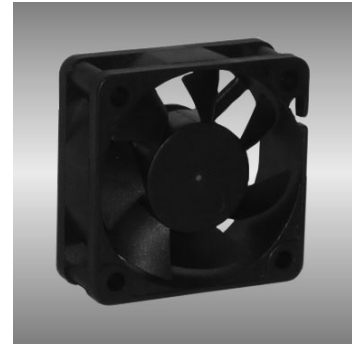
50

AGE series

50X50X20mm

●General Specification

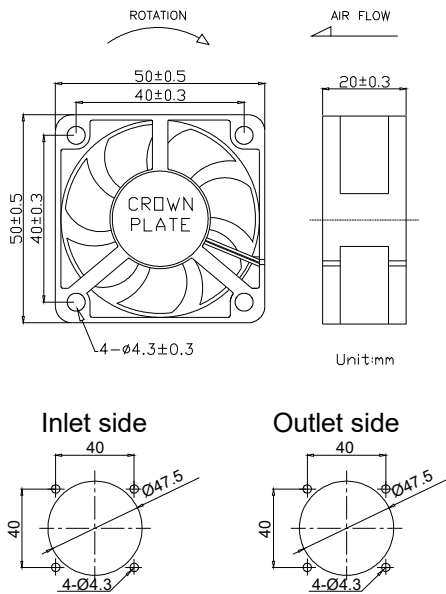
- Motor / DC single phase brushless motor
- Material / Frame : PBT (94V-0) ; Impeller : PBT(94V-0)
- Operation temp. / Two ball bearing : -10°C~70°C
FMB,sleeve Bearing : -10°C~50°C
- Storage temp. / -40°C~80°C
- Non-condensing environment
- Weight / 40g



●Specification *Bearing system B:two ball bearing F:fluid bearing S:sleeve bearing

Model	*Bearing System	Rated Voltage	Operating Voltage	Rated Current	Rated Speed	Maximum Air Flow	Maximum Static Pressure	Sound Level	P-Q Curve		
P/N	B / S / F	V	V	A	RPM	m³/min	CFM	Pa	In-H ₂ O	dB(A)	No.
AGE05020_12I	B / S	12	7.0~13.2	0.10	4000	0.29	10.1	24.9	0.10	24	①
AGE05020_12J	B / S	12	7.0~13.2	0.13	4800	0.36	12.7	34.9	0.14	28	②
AGE05020_12L	B / S	12	7.0~13.2	0.15	5600	0.42	14.8	44.8	0.18	32	③
AGE05020_12M	B / S	12	7.0~13.2	0.21	6400	0.50	17.6	62.3	0.25	36	④
AGE05020_12H	B / S	12	7.0~13.2	0.21	7000	0.57	20.3	74.7	0.30	38	⑤
AGE05020_24I	B / S	24	14.0~26.4	0.07	4000	0.29	10.1	24.9	0.10	24	①
AGE05020_24J	B / S	24	14.0~26.4	0.08	4800	0.36	12.7	34.9	0.14	28	②
AGE05020_24L	B / S	24	14.0~26.4	0.10	5600	0.42	14.8	44.8	0.18	32	③
AGE05020_24M	B / S	24	14.0~26.4	0.12	6400	0.50	17.6	62.3	0.25	36	④
AGE05020_24H	B / S	24	14.0~26.4	0.12	7000	0.57	20.3	74.7	0.30	38	⑤

● Drawing & panel out-cuts



● Characteristic Curves

