

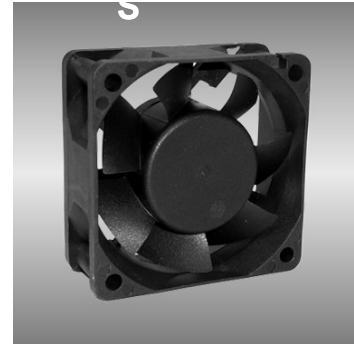
60

AGE series

60X60X25mm

● General Specification

- Motor / DC single phase brushless motor
- Material / Frame : PBT (94V-0) ; Impeller : PBT(94V-0)
- Operation temp. / Two ball bearing : -10°C~70°C
FMB,sleeve Bearing : -10°C~50°C
- Storage temp. / -40°C~80°C
- Non-condensing environment
- Weight / 57g



● Specification *Bearing system B:two ball bearing F:fluid bearing S:sleeve bearing

Model	*Bearing System	Rated Voltage	Operating Voltage	Rated Current	Rated Speed	Maximum Air Flow	Maximum Static Pressure	Sound Level	P-Q Curve		
P/N	B / S / F	V	V	A	RPM	m³/min	CFM	Pa	In-H ₂ O	dBA	No.
AGE06025_12J	B / S	12	7.0~13.2	0.10	3100	0.40	14.1	24.9	0.10	26	①
AGE06025_12L	B / S	12	7.0~13.2	0.12	3600	0.52	18.5	34.9	0.14	31	②
AGE06025_12M	B / S	12	7.0~13.2	0.16	4250	0.61	21.5	47.3	0.19	34	③
AGE06025_12H	B / S	12	7.0~13.2	0.35	5000	0.73	25.6	64.7	0.26	40	④
AGE06025_12U	B	12	7.0~13.2	0.40	6800	0.99	34.8	127.0	0.51	47	⑤
AGE06025_24J	B / S	24	14.0~26.4	0.06	3100	0.40	14.1	24.9	0.10	26	①
AGE06025_24L	B / S	24	14.0~26.4	0.08	3600	0.52	18.5	34.9	0.14	31	②
AGE06025_24M	B / S	24	14.0~26.4	0.11	4250	0.61	21.5	47.3	0.19	34	③
AGE06025_24H	B / S	24	14.0~26.4	0.20	5000	0.73	25.6	64.7	0.26	40	④
AGE06025_24U	B	24	14.0~26.4	0.25	6800	0.99	34.8	127.0	0.51	47	⑤
AGE06025_48J	B / S	48	28.0~56.0	0.05	3100	0.40	14.1	24.9	0.10	26	①
AGE06025_48L	B / S	48	28.0~56.0	0.06	3600	0.52	18.5	34.9	0.14	31	②
AGE06025_48M	B / S	48	28.0~56.0	0.07	4250	0.61	21.5	47.3	0.19	34	③
AGE06025_48H	B / S	48	28.0~56.0	0.12	5000	0.73	25.6	64.7	0.26	40	④

● Drawing & panel out-cuts

● Characteristic Curves

