

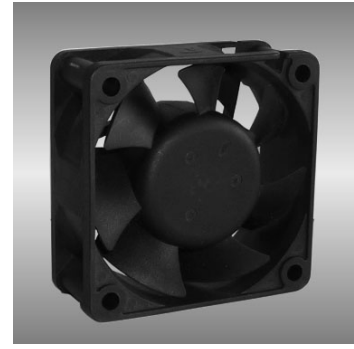
60

AGF series

60X60X25mm

● General Specification

- Motor / DC single phase brushless motor
- Material / Frame : PBT (94V-0) ; Impeller : PBT(94V-0)
- Operation temp. / Two ball bearing : -10°C~70°C
FMB,sleeve Bearing : -10°C~50°C
- Storage temp. / -40°C~80°C
- Non-condensing environment
- Weight / 60g



● Specification *Bearing system B:two ball bearing F:fluid bearing S:sleeve bearing

Model	*Bearing System	Rated Voltage	Operating Voltage	Rated Current	Rated Speed	Maximum Air Flow	Maximum Static Pressure	Sound Level	P-Q Curve		
P/N	B / S / F	V	V	A	RPM	m³/min	CFM	Pa	In-H ₂ O	dBA	No.
AGF06025_12J	B / S	12	7.0~13.2	0.08	3100	0.48	17.1	29.9	0.12	26	①
AGF06025_12L	B / S	12	7.0~13.2	0.12	3600	0.61	21.5	39.8	0.16	31	②
AGF06025_12M	B / S	12	7.0~13.2	0.15	4250	0.68	24.0	54.8	0.22	34	③
AGF06025_12H	B / S	12	7.0~13.2	0.28	5000	0.95	33.6	62.3	0.25	40	④
AGF06025_12U	B	12	7.0~13.2	0.45	6800	1.24	43.8	139.4	0.56	56	⑤
AGF06025_12V	B	12	7.0~13.2	0.48	7500	1.36	47.9	196.7	0.79	63	⑥
AGF06025_12W	B	12	7.0~13.2	0.54	9800	1.57	55.5	291.3	1.17	66	⑦
AGF06025_24J	B / S	24	14.0~26.4	0.06	3100	0.48	17.1	29.9	0.12	26	①
AGF06025_24L	B / S	24	14.0~26.4	0.06	3600	0.61	21.5	39.8	0.16	31	②
AGF06025_24M	B / S	24	14.0~26.4	0.08	4250	0.68	24.0	54.8	0.22	34	③
AGF06025_24H	B / S	24	14.0~26.4	0.16	5000	0.95	33.6	62.3	0.25	40	④
AGF06025_24U	B	24	14.0~26.4	0.28	6800	1.24	43.8	139.4	0.56	56	⑤
AGF06025_48L	B / S	48	28.0~56.0	0.06	4250	0.68	24.0	54.8	0.22	34	③
AGF06025_48M	B / S	48	28.0~56.0	0.10	5000	0.95	33.6	62.3	0.25	40	④
AGF06025_48H	B	48	28.0~56.0	0.17	6800	1.24	43.8	139.4	0.56	56	⑤

● Drawing & panel out-cuts

● Characteristic Curves

